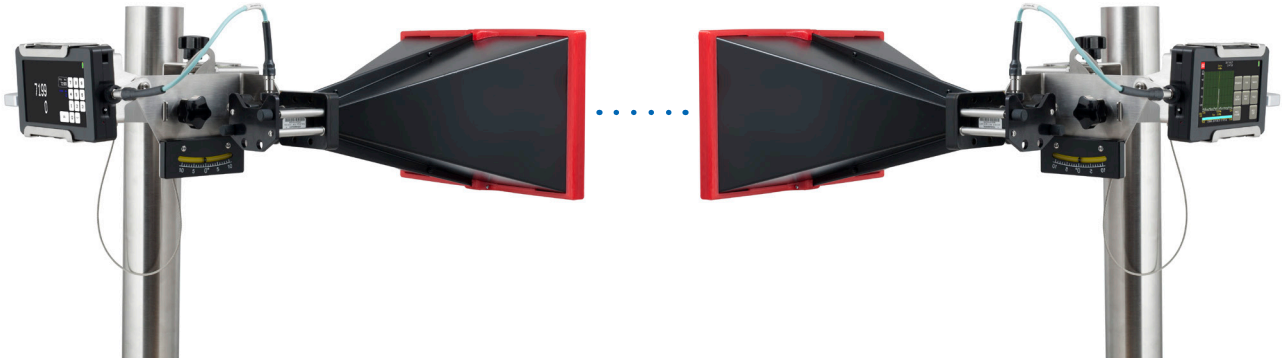




Line of Sight verification kit introduction



SAF LoS verification kit is a small size, handheld battery operated solution that uses radio frequencies to verify microwave point to point radio line of sight.

Benefits:

- Verification for distances of up to 85km/52miles, using small antennas
- Reliable results
- Battery operated solution, no external power source required
- Easy to take up on the tower
- LoS verification before actual link installation
- Easy to use, quick measurements
- Results applicable for PtP links operating in frequencies from 5GHz up to 38GHz

SG Compact signal generator side

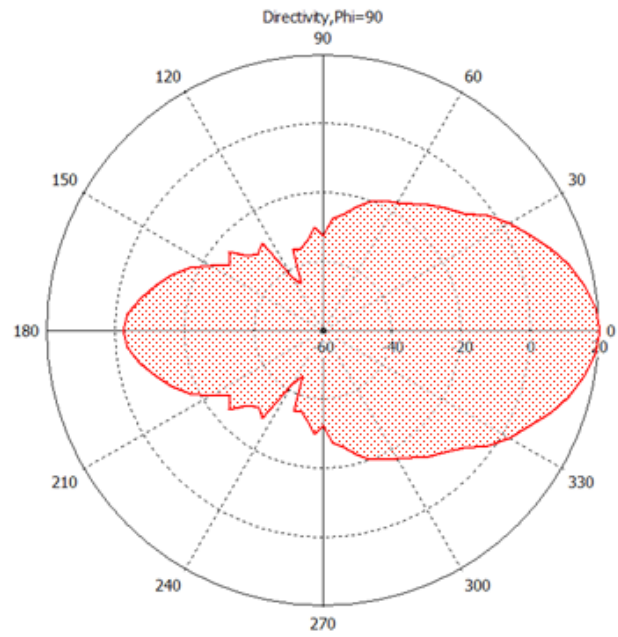
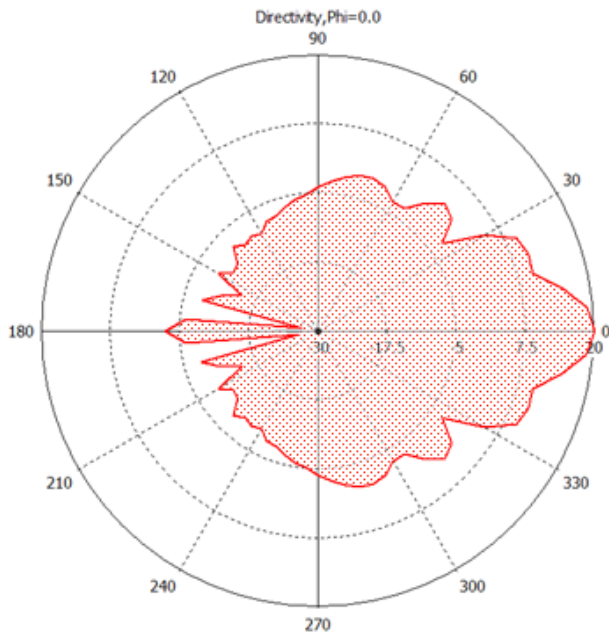
| | |
|---------------------------|--|
| P/N | JOSSAG11 |
| Frequency range | 5.925 – 12.000 |
| Output power range | -3...+13 dBm |
| Frequency accuracy | +/- 10 ppm |
| Phase noise | < -80 dBc/Hz @ 100 kHz |
| Adjustable frequency step | 1 MHz |
| Adjustable power step | 1 dBm |
| Signal form | Continuous wave |
| Sweep speed | 0.5s @ 100 MHz Span |
| Accuracy | +/- 1 dB* |
| Output | 50 ohm SMA (f) |
| Interface | Mini USB 2.0 (1.1) |
| Battery | 2380 mAh Lithium Polymer |
| Battery life | up to 4h |
| Operating temperature | -15°C to +55°C / 5°F to 131°F |
| Dimensions | 128 x 81 x 24 mm 5.04 x 3.2 x 0.94 in |
| Weight | 0.3 kg / 10.6 oz |

*Guaranteed throughout all the temperature range

Spectrum Compact spectrum analyzer side

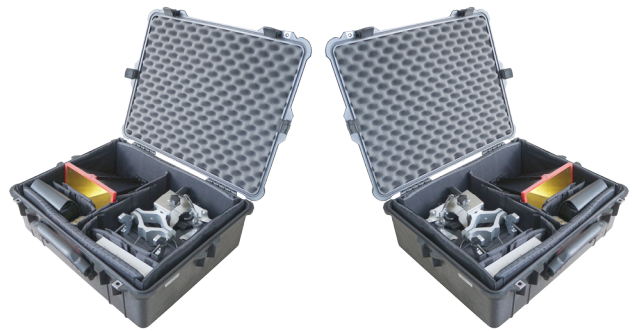
| | |
|-----------------------|--|
| P/N | JOSSAP11 |
| Frequency range | 5.925 – 12.000 |
| Input dynamic range | -105 to – 40 dBm |
| Max input power | 0 dBm |
| RBW | 1 MHz |
| VBW | 300 kHz |
| Min. Span | 100 MHz |
| Max. Span | full bandwidth |
| Sweep speed | 0.5s @ Min. Span |
| Accuracy | +/- 1 dB* |
| Input | 50 ohm SMA (f) |
| Interface | mini USB 2.0 (1.1) |
| Battery | 2380 mAh Lithium Polymer |
| Battery life | up to 4h |
| Operating temperature | -15°C to +55°C / 5°F to 131°F |
| Dimensions | 128 x 81 x 24 mm 5.04 x 3.2 x 0.94 in |
| Weight | 0.3 kg / 10.6 oz |

*Guaranteed at 21°C/70°F CW signal



Electrical and mechanical specifications for LoS antenna

| | |
|--------------------------------|------------------------------------|
| P/N | J0AA06R001 |
| Frequency range | 5.925 – 8.20 |
| Gain (typical), dBi | 21 |
| Dimensions, mm/inch | 250 x 235 x 155/9.84 x 9.25 x 6.10 |
| Net weight, kg/lb | 1.25 / 2 |
| Flange (connector) | WR173 (UDR70) |
| Matching Spectrum Compact unit | J0SSAP11 |
| Matching Signal Generator unit | J0SSAG11 |
| Beamwidth (E-plane) deg | 14.3 |
| Side lobe level (E-plane) | -9.5 dB |
| Beamwidth (H-plane) deg | 17.6 |
| Side lobe level (H-plane) | -22.4 dB |
| Front-to-Back ratio | 22.38 |



What you will get:

- Spectrum analyzer Spectrum Compact 6 – 12GHz
- Signal generator SG compact 6 – 12GHz
- 2x 21dBi small horn antenna with mounting bracket
- 2x waveguide adapter UDR70 to SMA, 5.38-8.2 GHz, WR137
- 2x 2.92mm coaxial RF cable
- 2x lanyard
- 2x USB to mini USB cable
- 2x AC/DC USB charger
- 2x protective case
- RF filter with 9GHz cut-off frequency

For more detailed information about SAF Tehnika products visit www.saftehnika.com or contact your SAF Tehnika representative info@saftehnika.com
 Product features may vary between different models and configurations. They are subject to change without prior notice.

SAF Tehnika © 2021